

# Soil Binder® Environmental Engineering

## Stabilizing system for Roads and nature paths



Generates a hard and robust surface with long life time second to none

### What is Soil Binder®?

Soil Binder® is an innovative formulation with environmentally friendly water based copolymer for various purposes such as, Roads and Nature/Walking/Biking paths. It can also be used to repair of concrete, asphalt, surface sealers and more.

### Benefits

- Environmentally friendly.
- Efficient process with few personnel and basic equipment.
- Hydrophobic with long life time and minimal repair maintenance.
- Prevents surface from deteriorating and cracking.
- Uses native in place soils wherever possible.
- Minimize unhealthy particles in the air.
- Has a short curing time.
- High strength and load bearing.
- Cost effective alternative to asphalt.

Soil Binder® A formula for road construction and stabilization system which creates an impenetrable, durable surface with superior compressive strength.

# Soil Binder® Environmental Engineering

When working with SolliQ and using SoilBinder® we will follow you all the way to finished installation through Planning, Installation, Performance testing and Quality Assurance program. Following is what you can expect when working with SolliQ:

## Planning and Installation

SolliQ delivers complete engineering services including analysis of material and soils used in the installation such as moisture determination, strength testing in laboratory environment, water mix ratio, correct blending and design. Where and as appropriate, Soil Binder® formula is custom formulated for performance to the site specific factors.

A complete analysis of the soil is conducted including:

- Strength.
- Flexibility.
- Moisture content.
- Determination of particle distribution.



Recommendations are provided by our laboratory targeting the most cost-effective application meeting the predecided criterias.

During installation, among the factors are controlled to assure the maintenance performance specifications include:

- Resilience and stiffness.
- Monitoring and testing during installation for specified results.
- Compaction.
- Moisture content.

## Quality Assurance

After installation SolliQ will perform strength, bearing and stability testing with non-destructive methods and immediate results. The Quality Assurance program will approve specified target measures assuring performance results of stiffness, modules, and CBR values.



# Soil Binder® Environmental Engineering

(1) Tiller



## Equipment used

Typical equipment used during a normal installation is:

- (1) Tiller
- (2) Water & Soil Binder Application Truck
- (3) Tilling and Fibre blending
- (4) Graders
- (5) Roller
- (6) Top Coat Sealer Truck

(2) Water & Soil Binder Application Truck



Application Rate determined by soil type



# Soil Binder® Environmental Engineering

(3) Tilling and Fibre blending



(3) Tilling and Fibre blending



(3) Tilling and Fibre blending

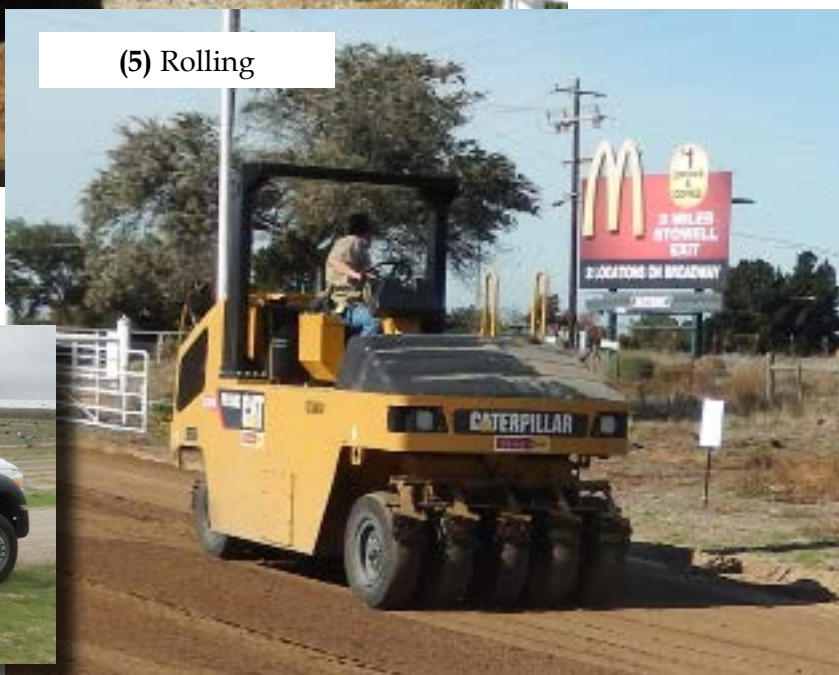


# Soil Binder® Environmental Engineering

(4) Grading



(5) Rolling



(6) Sealer Truck

